

[www.haituimachinery.com](http://www.haituimachinery.com)

**HAITUI**<sup>®</sup>



International Division  
Haitui Office Building, HongXiang Road,  
Economic Development Zone, Jining, Shandong  
Tel: (86) 537-6561156  
Fax: (86) 537-6561156  
Email: [sales@haituichina.com](mailto:sales@haituichina.com)

**LOADERS**

## Corporate Overview

Shandong Haitui Heavy Industry Machinery Co.,Ltd established since 2010, is a leading manufacturer of construction equipment, offers machinery including bulldozers, wheel loaders and excavators unparalleled in price, quality and performance.

Haitui machinery factory located in economic and development zone, Jining city, Shandong province. It covers around 40000 m<sup>2</sup> and have more than 100 workers. The new plant composed by spare parts area, forging workshop, assembly workshop, testing area and office building. The annual production capacity can reach 2000 units machineries to meet the demand of domestic and international market.

With the strong technical support of Haitui Research & Development team, Haitui machinery is manufactured with international standard of quality and safety to withstand even the most extreme climatic conditions and rugged terrains. One year or 2000 hours long time warranty and excellent after-sales service ensure the nice experience.

Today the company's clients spans over 50 countries.



## ZL908 WHEEL LOADER

RATED LOAD: 800KG  
OPERATING WEIGHT: 2500KG



### DETAILS



### MAIN SPECIFICATIONS

ITEM	ZL908
Operating Weight (kg)	2700
Dimension L×W×H (mm)	5170×1400×2580 mm
Loading Capacity (kg)	800kg-1000kg
Bucket Capacity (m <sup>3</sup> )	0.4
Tires	12-16.5 / (31×15.5-15 for option)
Engine	Changchai ZN390
Rated Power (KW)	25
Max Torque (N.m)	110
Max Speed (Km/h)	32
Wheel Base (mm)	2080
Max. Traction Force (KN)	42
Max. Breakout Force (KN)	43
Max Lifting Height (mm)	3800
Max Dumping Height (mm)	2460
Min Turning Radius (mm)	2800
Transmission	Hydraulic Torque Converter
Gear Shift	F2+R2
Brake System	Oil brake

### ATTACHMENTS



**ZL916 WHEEL LOADER**

RATED LOAD: 1.2 Ton  
OPERATING WEIGHT: 3600KG



**ZL918A WHEEL LOADER**

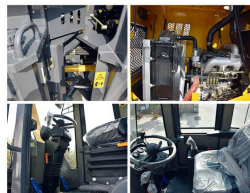
RATED LOAD: 1.5 Ton  
OPERATING WEIGHT: 4050KG



**MAIN SPECIFICATIONS**

ITEM	ZL916
Operating Weight (kg)	3600
Dimension L×W×H (mm)	5545×1880×2740 mm
Loading Capacity (kg)	1200
Bucket Capacity (m3)	0.65
Tires	20.5/70-16
Engine	YunNei
Rated Power (KW)	42
Max Torque (N.m)	195
Max Speed (Km/h)	25
Wheel Base (mm)	2135
Max. Traction Force (KN)	49
Max. Breakout Force (KN)	48
Max Lifting Height (mm)	4210
Max Dumping Height (mm)	3300
Min Turning Radius (mm)	4950
Transmission	Hydraulic Torque Converter
Gear Shift	F2+R2
Axle	Hub Reduction Axle
Brake System	Air over hydraulic oil brake on 4 wheels

**DETAILS**



**DETAILS**



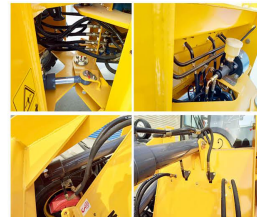
**MAIN SPECIFICATIONS**

ITEM	ZL918A
Operating Weight (kg)	4050
Dimension L×W×H (mm)	5545×1880×2740 mm
Loading Capacity (kg)	1500
Bucket Capacity (m3)	0.65
Tires	20.5/70-16
Engine	Xichai 4DW91-45 / Xinchai A498BT1 (Euro 3)
Rated Power (KW)	33 / 36.8
Max Torque (N.m)	195
Max Speed (Km/h)	25
Wheel Base (mm)	2305
Max. Traction Force (KN)	49
Max. Breakout Force (KN)	48
Max Lifting Height (mm)	4210
Max Dumping Height (mm)	3300
Min Turning Radius (mm)	4950
Transmission	Hydraulic Torque Converter
Gear Shift	F2+R2
Axle	Hub Reduction Axle
Brake System	Air over hydraulic oil brake on 4 wheels

**DETAILS**



**DETAILS**



**ZL918D WHEEL LOADER**

RATED LOAD: 1.5 Ton  
OPERATING WEIGHT: 4050KG



**ZL928A WHEEL LOADER**

RATED LOAD: 2 Ton  
OPERATING WEIGHT: 5050KG



**MAIN SPECIFICATIONS**

ITEM	ZL918D
Operating Weight (kg)	4050
Dimension L×W×H (mm)	5049×1719×2525 mm
Loading Capacity (kg)	1500
Bucket Capacity (m3)	0.60
Tires	20.5/70-16
Engine	Xichai 4DW91-45 / Xinchai A498BT1 (Euro 3)
Rated Power (KW)	33 / 36.8
Max Torque (N.m)	195
Max Speed (Km/h)	25
Wheel Base (mm)	2246
Max. Traction Force (KN)	49
Max. Breakout Force (KN)	48
Max Lifting Height (mm)	3895
Max Dumping Height (mm)	2655
Min Turning Radius (mm)	4348
Transmission	Hydraulic Torque Converter
Gear Shift	F2+R2
Axle	ISUZU Axle
Brake System	Air over hydraulic oil brake on 4 wheels

**DETAILS**



**LOADING**



**MAIN SPECIFICATIONS**

ITEM	ZL928A
Operating Weight (kg)	5050
Dimension L×W×H (mm)	5750×2008×2890 mm
Loading Capacity (kg)	2000
Bucket Capacity (m3)	1.0
Tires	16/70-20
Engine	YunNei 33GBZ / YunNei 38GBZ
Rated Power (KW)	65 / 76
Max Torque (N.m)	256
Max Speed (Km/h)	28
Wheel Base (mm)	2270
Max. Traction Force (KN)	61
Max. Breakout Force (KN)	60
Max Lifting Height (mm)	4330
Max Dumping Height (mm)	3200
Min Turning Radius (mm)	5200
Transmission	Hydraulic Torque Converter
Gear Shift	F2+R2
Axle	Hub Reduction Axle
Brake System	Air over hydraulic oil brake on 4 wheels

**DETAILS**



**LOADING**



**ZL928D WHEEL LOADER**

RATED LOAD: 2 Ton  
OPERATING WEIGHT: 5050KG



**ZL932 WHEEL LOADER**

RATED LOAD: 2.5 Ton  
OPERATING WEIGHT: 6500KG



MAIN SPECIFICATIONS	
ITEM	ZL928D
Operating Weight (kg)	5050
Dimension L×W×H (mm)	5750×2008×2890 mm
Loading Capacity (kg)	2000
Bucket Capacity (m3)	1.0
Tires	16/70-20
Engine	YunNei 38GBZ
Rated Power (KW)	76
Max Torque (N.m)	340
Max Speed (Km/h)	28
Wheel Base (mm)	2270
Max. Traction Force (KN)	75
Max. Breakout Force (KN)	76
Max Lifting Height (mm)	4330
Max Dumping Height (mm)	3200
Min Turning Radius (mm)	5200
Transmission	Hydraulic Torque Converter
Gear Shift	F2+R2
Axle	Hub Reduction Axle
Brake System	Air over hydraulic oil brake on 4 wheels



MAIN SPECIFICATIONS	
ITEM	ZL932
Operating Weight (kg)	6500
Dimension L×W×H (mm)	6200×2235×2940 mm
Loading Capacity (kg)	2500
Bucket Capacity (m3)	1.3
Tires	16/70-24
Engine	YunNei / DEUTZ
Rated Power (KW)	92 / 92
Max Torque (N.m)	340
Max Speed (Km/h)	28
Wheel Base (mm)	2450
Max. Traction Force (KN)	92
Max. Breakout Force (KN)	130
Max Lifting Height (mm)	5190
Max Dumping Height (mm)	3750
Min Turning Radius (mm)	5200
Transmission	Hydraulic Torque Converter
Gear Shift	F4+R4
Axle	Hub Reduction Axle
Brake System	Air over hydraulic oil brake on 4 wheels



**ZL936 WHEEL LOADER**

RATED LOAD: 3 Ton  
OPERATING WEIGHT: 9700KG



**ZL956 WHEEL LOADER**

RATED LOAD: 5 Ton  
OPERATING WEIGHT: 17100KG



MAIN SPECIFICATIONS	
ITEM	ZL936
Operating weight (kg)	9700
Dimension L×W×H (mm)	7150×2430×3070
Loading capacity (kg)	3000
Bucket capacity (m3)	1.8
Engine	WEICHA-DEUTZ
Rated power (KW)	92
Max Torque (N.m)	500
Fuel Tank Capacity (L)	156
Wheel base (mm)	2660
Max. traction force (KN)	97
Max. breakout force (KN)	127
Grade ability (°)	30
Minimum turning radius	5097
Max Dumping height (mm)	3100
Max Lifting Height (mm)	4300
Brake System	Air over hydraulic oil brake on 4 wheels
Mix.travel speed (km/h)	40
Tires	17.5-25



MAIN SPECIFICATIONS	
ITEM	ZL956
Operating Weight (kg)	17100
Dimension L×W×H (mm)	7920×2980×3400 mm
Loading Capacity (kg)	5000
Bucket Capacity (m3)	3.0
Tires	23.5-25
Engine	Weichai Steyr
Rated Power (KW)	162
Max Torque (N.m)	860
Max Speed (Km/h)	38
Wheel Base (mm)	3200
Max. Traction Force (KN)	160
Max. Breakout Force (KN)	175
Max Lifting Height (mm)	4350
Max Dumping Height (mm)	3150
Min Turning Radius (mm)	6640
Transmission	Hydraulic Torque Converter
Gear Shift	F4+R4
Axle	Hub Reduction Axle
Brake System	Air over hydraulic oil brake on 4 wheels



**Attachments**



**Application Cases**

With various kinds of attachments can be equipped, Haitui loaders is multifunctional and ideal machines to be used at farm work, earthmoving, construction project etc.



**Parts & Service**

Haitui Parts and Service Centers provides a convenient channel for you to order the original spare parts. From determining the correct part number to locating and ordering, we are committed to working 24 hours for timely solutions and delivery to ensure we serve our customers promptly and efficiently.

Our dedicated team of customer service executives, skilled engineers and technicians are well-trained to ensure timely and propitious support throughout the customer life cycle.

